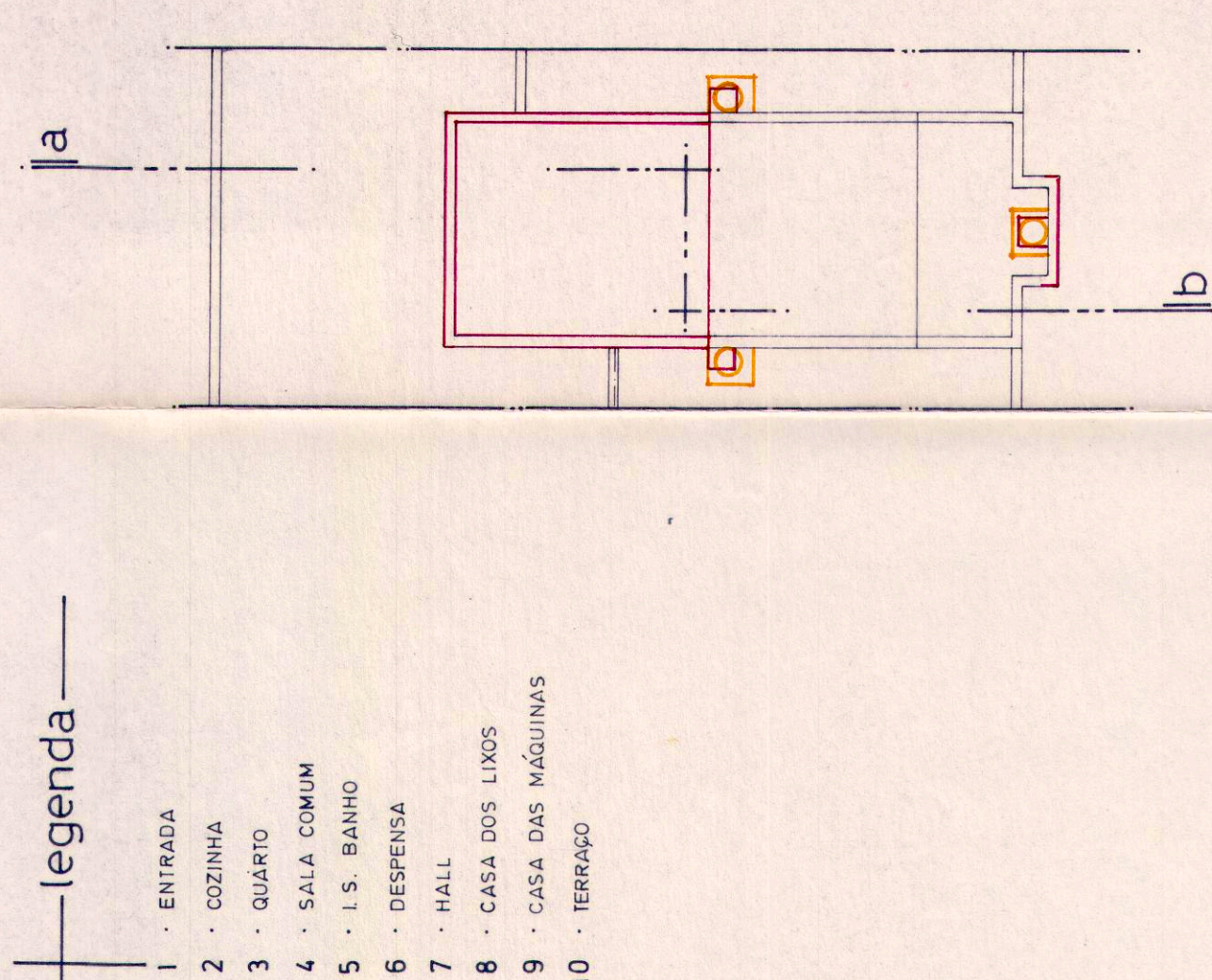
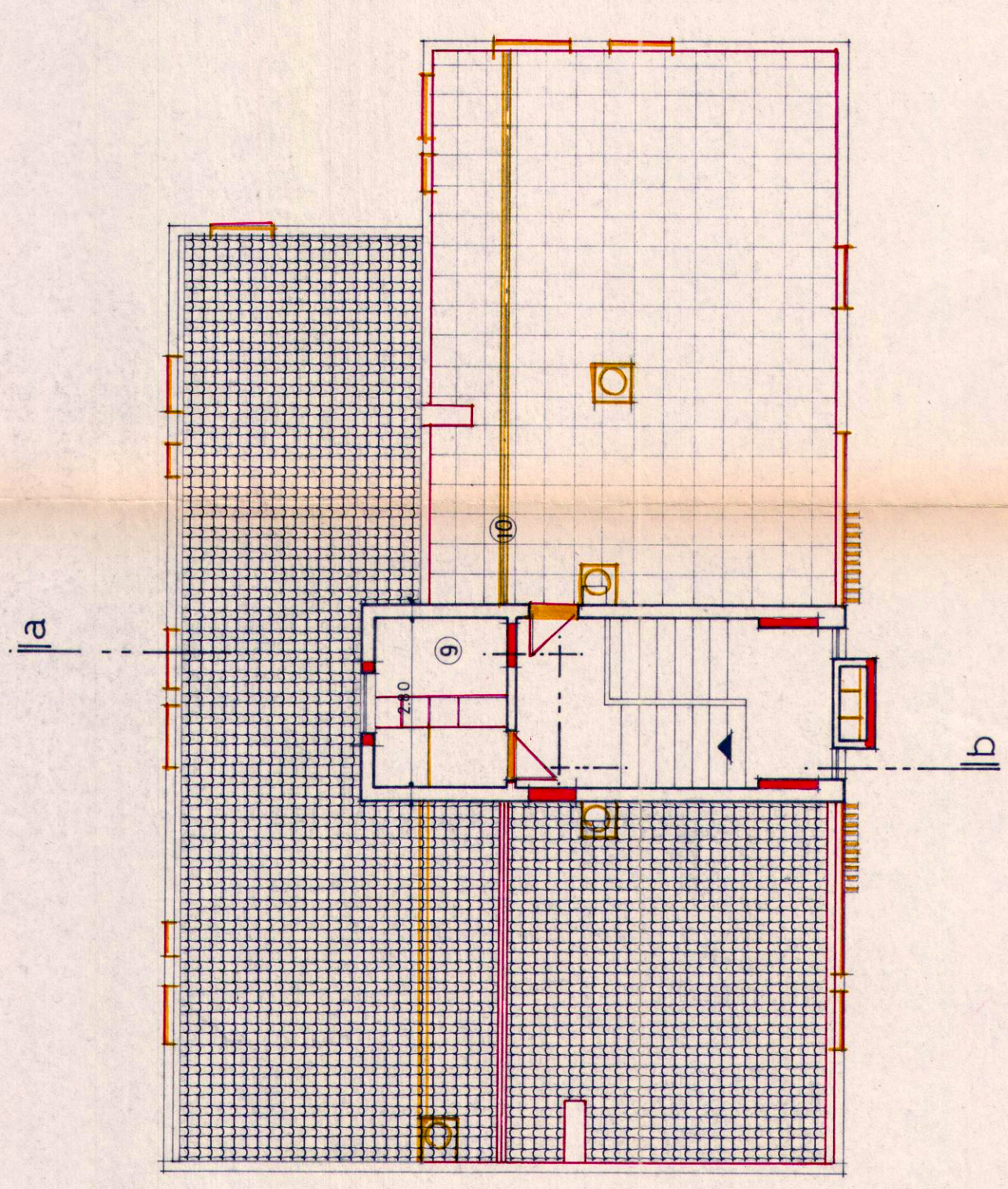


ORIGINAL

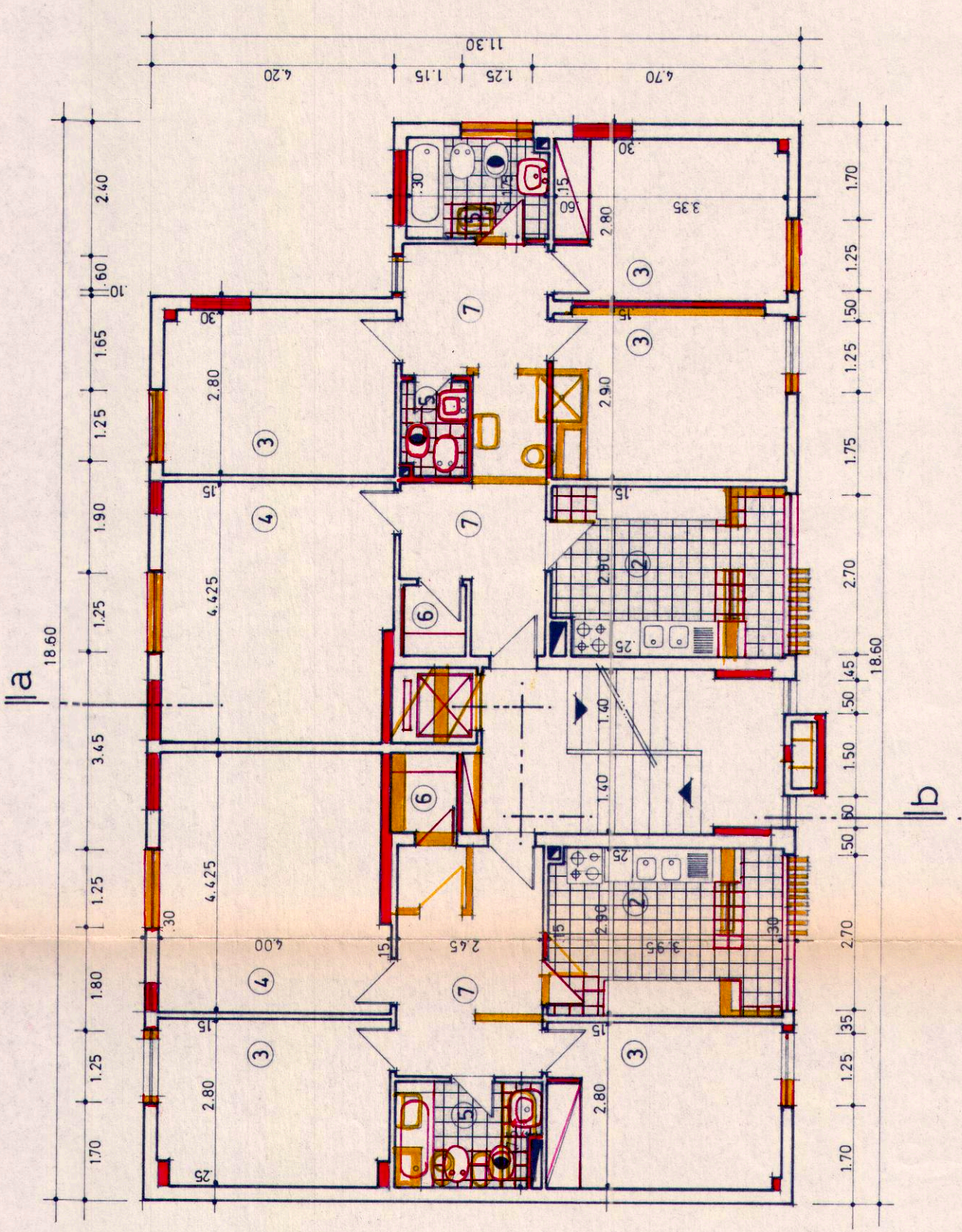


legenda

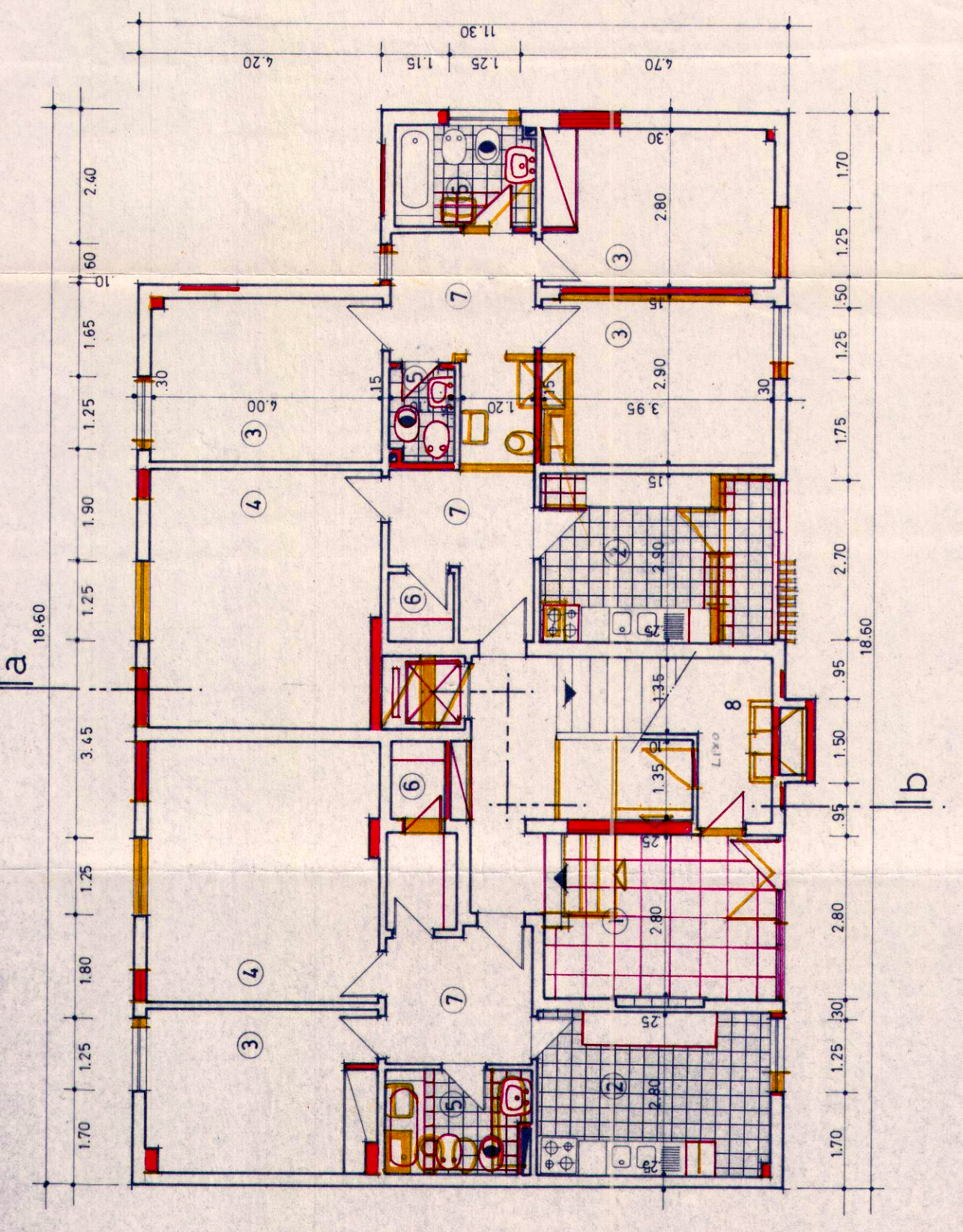
- 1 · ENTRADA
- 2 · COZINHA
- 3 · QUARTO
- 4 · SALA COMUM
- 5 · I.S. BANHO
- 6 · DESPENSA
- 7 · HALL
- 8 · CASA DOS LIVROS
- 9 · CASA DAS MÁQUINAS
- 10 · TERRAÇO



Casa das máquinas e cobertura



2º, 3º, 4º, e 5º pisos



1º piso

3  
 3 SET 1970  
 0 0411 E 1303 S 1  
 3